

FOOD PLANNING, ECOSYSTEM SERVICES AND URBAN-RURAL GOVERNANCE. good practices in Lombardy region



Angela Colucci

Resilient urban food systems | good practices from Milan's peri-urban areas

2011 - 2012



CIVES – citizen towards the sustainability



POLITECNICO
DI MILANO

DAS^tU

Dipartimento Architettura e Studi Urbani



fondazione
cariplo

JANUARY 2012 – DECEMBER 2014



INTERREG IVC Urban-Rural partnerships in Metropolitan Areas (URMA).



Germany

Poland

Italy

Netherlands

Bulgaria

HafenCity University Hamburg,
(Lead Partner)
State Ministry of Urban Development
and Environment, Free and Hanseatic
City of Hamburg
Regional Office for Spatial Planning of
Westpomerania, Szczecin
Institute of Urban Development, Krakow
Tuscany Region
Lombardia Region
Municipality Borne
Municipality Enschede
Plieven Regional Administration

HCU | HafenCity Universität
Hamburg



Regione Lombardia



MILANO 2015
NUTRIRE IL PIANETA
ENERGIA PER LA VITA



PARTICIPATORY PROCESS

KNOWLEDGE & CAPACITY BUILDING OF LOCAL ASSOCIATIONS

SHARED VISION AND PROPOSALS (TO PUBLIC ADMINISTRATION)

Territorial analysis

Urban transformations and trends

Planning and governance framework



Good practices Analysis + bottom up proposals (citizens)

Bottom-up proposals (sheet + maps)



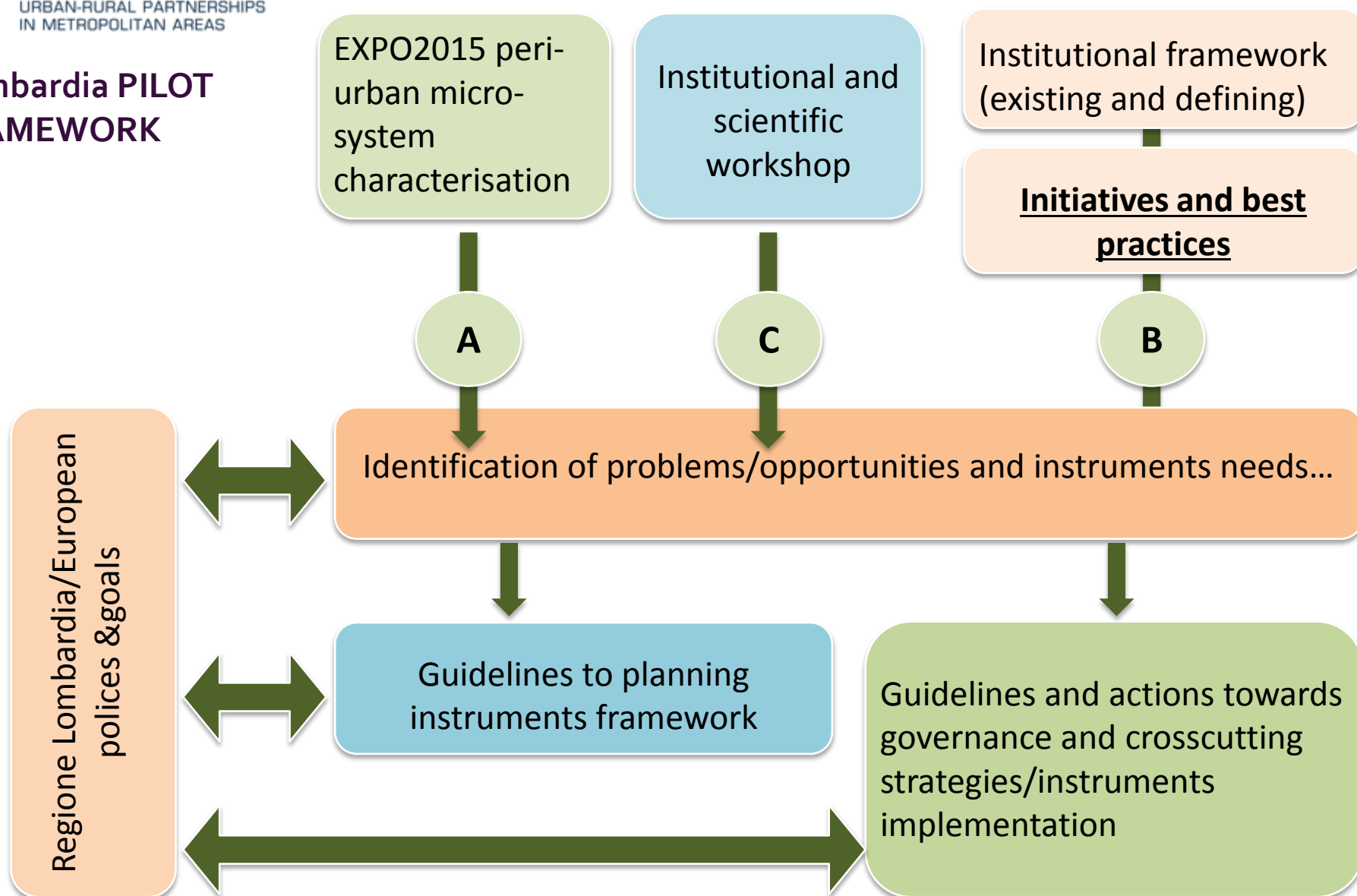
Shared vision towards sustainability and rural-urban integration

Shared vision



<http://www.cives.partecipami.it/>

Lombardia PILOT FRAMEWORK



	implementation	management	green infrastructure		ecosystem	blue infrastructure		ecosystem	food chain + agricultural multifunctionality		ecosystem	
	definition of the case	location/program	level and management approach	vegetation improvement (transformation) / new local vegetation belts	green network + biodiversity	positive/negative + high/medium/low effect on the topic	improvement of water cycle	water courses improvement	positive/negative + high/medium/low effect on the topic	food system strategies	multifunctionality in agriculture area	positive/negative + high/medium/low effect on the topic
Parco delle Rade	bottom up	realized										
Consorzio GDA (strategic agri-food business)	institutional support	plans										
CEUR – Disereto di economia sostenibile scuola del parco agricolo Sesto Milano	bottom up	realized										
Basil Mercati	bottom up/BAI											
Associazione Cascine Milano	top institutional											
Parco Naviglio Grande	bottom up	planned										
parco lineare naviglio grande	bottom up	planned										
Progetto parco E comuni	top down + institutional											
Parco di Torino	top down institutional	realized										
PARCO DELLE CAVE	top down institutional	realized										
BOSCONOVITA	top down institutional	realized										
PARCO GROSSE	top down institutional	realized										
progetto ESPO (general master plan)	top down + institutional											
Via d'Isola	top down + institutional											
Denarea di Milano Project	top down + institutional											



The Association of “Parco delle Risaie” (rice field Park) was founded in 2008

Services performed

- The rice park, presently, produces **55.000 rice courses per day in 600 ha**.
- In one year it produces **20.075.000 rice courses at 0 Km**
- It receives about **20.000 visitors per year**,
- It catches about **6.000.000 mc of rain water per year**,
- In summer it is about **5 degrees cooler than the town**,
- It host a lot of birds important for biodiversity, as Storks, Night heron and others
- It catches about **7.000 tons of Co2 per year**, and it make people safe money with the 0 Km and the easy accessibility by public transportation

.... And soil conservation, silence, well being and well growing up, biodiversity, direct interaction with food and productions, reduction of supply vulnerability, education

Biodiversity inside the Park rice (storks)





Cultural and leisure events

Vision and strategic project(s) design process



DESR - DISTRETTO DI ECONOMIA SOLIDALE RURALE DEL PARCO AGRICOLO SUD MILANO, District of Sustainable rural Economy of PASM (Parco Agricolo Sud di Milano - South Rural Park of Milan)

The DESR Association was founded in 2008

**BUON MERCATO DI CORSICO
(LOCAL BIO-FOOD MARKET OF CORSICO MUNICIPALITY)**

The “Buon Mercato” was opened in 2010



**BuonMercato
has its
operational
and legal
headquarter at
Cabassina Park
in Corsico**





- BuonMercato has founded his experience on the **collaboration among different actors** being a **concrete experience** to promote the **social progress**
- **public administration, promotion of periurban agriculture and ethical purchase:** Comune di Corsico (project leader), Distretto di Economia Solidale e Rurale del Parco Agricolo Sud Milano, Associazione Forum Cooperazione e Tecnologia, GAS La Buccinella di Buccinasco, Gas Baggio, ACLI di Corsico
- In three years, the collaboration with these subjects has been strengthened and **new relationships** have been created: Rimaflow , Trezzano sul Naviglio, Gas Cesano, Legambiente, Associazione Libera

- *"a joint initiative of public administration (Comune di Corsico) and local actors*
- *an association that promotes ethical purchasing and a sustainable lifestyle*
- *facilitates direct purchasing of commonly used goods from farmers and other producers , for people that can't create a Group (G.A.S.)*
- *supports G.A.S. and producers in logistic management"*



2013, March, 25 _ “agro- metropolis”

2013, February 21 _ workshop: a new agriculture in the PASM park

85 Producers

80 weekly orders

1.185 goods distributed weekly

3.500 € weekly sales volume

170.000 € yearly sales volume



Shop, Volunteers and staff pictures, Events and Associations meeting

ECO URBAN-RURAL LOCAL AGREEMENT" PRESPECTIVES

Criteria

(characteristics of urban-rural partnerships)

Able to include/deal with the Complexity (geographical and local dynamics)

flexibility

Bottom-up/institutional supported (public/private PS)

Crosscutting (governance polices)

**Social -ecological
Economic innovation**

phenomena

(characteristics of urban-rural partnerships)

Complexity of contexts (in single characteristics and in relationships between urban-rural transitions)

Variable panorama of services , scale and time dimensions

Variable panorama of stakeholders

Crosscutting polices (the phenomena connect different sectors of competencies and polices)

The social and economical dynamics requires a large range of support and solutions

ECO URBAN-RURAL LOCAL AGREEMENT" PRESPECTIVES

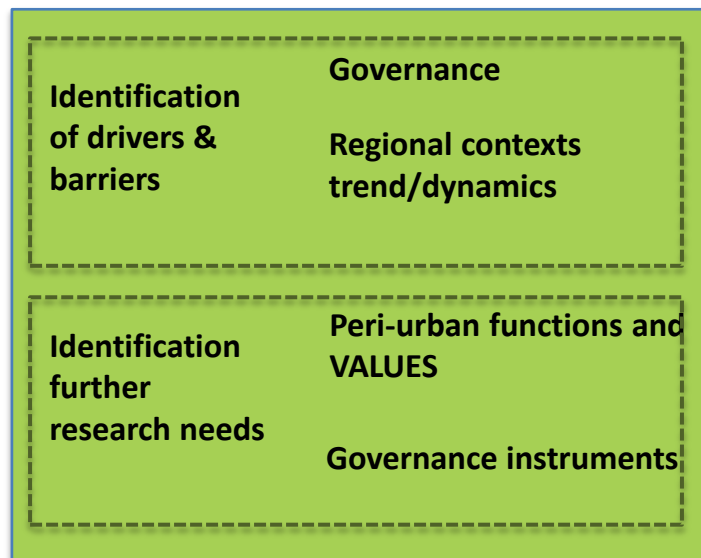
NEEDS/ISTANCES

- 1) „regional“ crosscutting workgroup (tavolo PTR) > **methodology/instrument to be implemented in planning instruments towards the peri-urban safeguard and soil consumption reduction + Ecosystem services**
- 2) Crosscutting “workshops/workgroup” on **urban and rural areas** (VAS POR/PSR) > **instruments and financial support to the „ecosystem services“ and „urban-rural partnership” implementation at regional level**
- 3) “academic/scientific” workshops on urban resilience and rural vulnerability > **crosscutting policies / approach, ecosystem services, governance innovation**
- 4) **Sstakeholders/Local PA regional workshop/meeting (informal)**

INNOVATION IN governance/government of PERI-URBAN SYSTEM

“ECO URBAN-RURAL LOCAL AGREEMENT” PRESPECTIVES

Draft Proposal that includes governance instruments (feasibility) + Criteria/contents



Regional PLAN & PROGRAMS (PTR, PSR, POR..)

EU projects (Call on implementation)

Urban agenda, urban - rural partnership, soil consumption

Angela Colucci

Resilient urban food systems | good practices from Milan's peri -urban areas

Angela Colucci _ M.Arch., Ph.D.

www.angelacolucci.eu

angela.colucci@polimi.it

Co.O.PE.Ra.Te. Ltd
Environmental and regional
development research
via Sant'Ennodio 1/a, 27100 Pavia

Department of Architecture and Urban
Studies

Politecnico di Milano
viale Golgi 39, 20133 Milano
PHO +390223995450

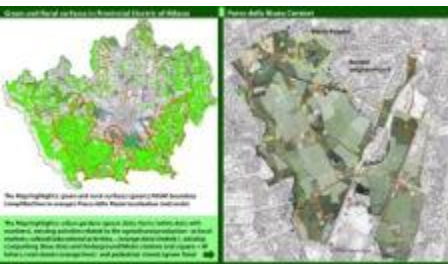
REsilienceLAB

www.resiliencelab.eu

Angela Colucci

Resilient urban food systems | Two good practices from Milan's peri -urban areas

ANNEX | good practices synthesis



PARCO DELLE RISAIE (RICE FIELD PARK)

Urban-rural park improvement, food chain, landscape improvement

LOCATION OF THE PRACTICE

The area of the Parco delle Risaie is located south of the Milan metropolitan area between the historical channels Naviglio Grande and Naviglio Pavese

START DATE OF THE PRACTICE

The Association of “Parco delle Risaie” (rice field Park) was founded in 2008

ACTORS, STAKEHOLDERS AND LOCAL COMMUNITIES INVOLVEMENT

Association partners: Citizens, Farmers

The **citizens** and the Citizen Associations from the southern neighbourhoods of Milan were involved in the different activities promoted by the Parco delle Risaie. **Stakeholders and cultural associations** concerned with the improvement of the urban and rural landscape (such as Connection Cultures), cultural and educational institutions, local associations (such as local trade and craft associations...).

Farms and farmhouses located in the area of Parco delle Risaie (in particular, two of these already perform a range of multifunctional activities, such as educational, leisure and restoration activities) were directly involved in the Parco delle Risaie Association.

Other stakeholders involved:

The institutions (Lombardy Region, Parco Agricolo Sud Milano, Milan Municipality): in general the institutions were involved in the process and have started to acknowledge (and recognise) the Parco delle Risaie

Agricultural associations: the municipality of Milan has considerable agricultural surfaces and agricultural production. In the last few years, different agriculture/farming associations and/or different forms of mobilisation/coordination were organised. The different associations for agricultural production and market were involved in the definition of the Parco delle Risaie project.

DETAILED DESCRIPTION OF THE PRACTICE:

In 2008 the Parco delle Risaie Association was founded. Since 2008, thanks to the presence of the Association, the area has been given a name – “Parco delle Risaie”;

Since 2009 the Association has promoted events in the Parco delle Risaie (family days, local products distribution ...) involving citizens, local communities and other associations with the aim to communicate the value of the area of Parco delle Risaie, thus increasing its visibility and value

Since 2009 the Association, with the involvement of the farms, has submitted a strategic project with a clear identification of strategies and actions, and has developed a spatial concept plan (used as a starting point for the discussion during various public meetings and events).

Since 2009 the Association, with the involvement of institutions and other associations, has organised and participated in a large number of events in the metropolitan area and in the city of Milan (public meetings, agricultural products markets, photograph events/shows).

During these events the association has promoted the strategic project, the value of the context and the local production (rice) with the Logo and image (with a clear and effective use of its communication strategies);

Since 2010 the Association, with the involvement of other stakeholders and associations, has applied for two different calls by a bank foundation and has obtained financial support for the development of two projects.

As a result of the recognition and visibility (identity) obtained through the involvement and communication process, the Parco delle Risaie has also been recognised by the institutions (Lombardy region, provincial district and municipality of Milan).

Currently, the Parco delle Risaie is not a “instituted” natural preservation or rural park

GENERAL VISION/GOALS, STRATEGIES

The main strategies and projects are landscape and environmental improvement, agricultural production valorisation, improvement of leisure, educational and other functions for the citizens, mobility and accessibility (pedestrian and bicycle).

The **green and nature improvement** goal is divided into a number of strategies: among these, the identification of green infrastructures (the project provides three green axes in the Park land: one related to natural habitat improvement, one related to water and landscape improvement and one related to rural landscape improvement); the definition of green margins (tree and shrub lines along the margins with urban patterns) and the improvement of the quality and quantity of trees and of tree and shrub lines). Another action is the improvement of the existing ecological value of the area (naturalisation of water bodies, improvement of the vegetation along the channel belt, improvement of the wood area, improvement of humid habitat).

The **enhancement of the accessibility** (pedestrian and bicycle) to the Parco delle Risaie from urban neighbourhoods. The projects/actions related to this issue are: the building of new connections from the Naviglio Grande and the eastern urban area, the building of new connections from the Naviglio Pavese, the improvement of the visibility of the existing access from the Barona neighbourhood and the improvement of the continuity through the barrier of the motorway (and the settlements). The project also suggests a bike sharing service with different pick-up and drop-off points in the park. The creation of thematic paths: a cultural path with heritage buildings (old farmhouses, the old mill, the church ...) as staging points (with information points), a jogging path and a fitness path (with equipment).

The strategies and projects aimed at the **enhancement of leisure and multifunctional activities** (compatible with the rural activities and the landscape) are the "trattortreno", a "train" whose locomotive is a tractor that follows the path connecting the historic farmsteads, an educational path for children including a "rural playground", restaurants and educational activities in farms (organisation of cooking courses centred on the use of local products, children educational activities on farming and breeding), the "rice street" a structured path with educational/information points describing the different phases of rice production (the project includes educational points, restaurants and a local rice market).

**SPECIFIC
ACTIONS/POLICES
ON FOOD
PRODUCTION/FOOD
CHAIN**

A strategic goal is the integration between the agricultural and the urban context: a key strategic goal is the development of market networks for promoting local agricultural products in city markets and retail shops: the creation of distribution points of local rice products in existing urban markets, the integration of local rice products in the informal network of local agricultural food purchase.

The Association and the farmers promote the brand of the local rice production of the *Parco delle Risaie*. The production is a intensive agricultural production of rice in the agricultural areas/fields of the Park

The local Farms involved that have actually a active production are:

Cascina Battivacco: info point, didactic farm, market point, rice production

Cascina San Marchetto: rice production

Cascina di Mezzo: rice production

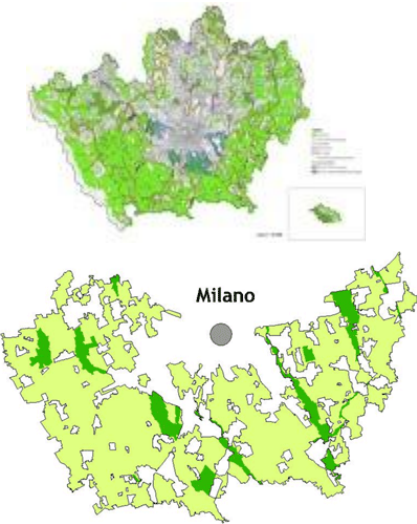
Cascina Basmetto: rice production, vegetables production, market point

Cascina Inferiore: rice production

LESSONS (POSITIVE)	<p>Process (bottom up)</p> <p>Communication and citizen involvement</p> <p>Integration between citizen and farmers</p> <p>Strategic vision proposed</p> <p>Integrated strategies (environment, landscape, rural production, multi-functionality ...)</p> <p>(critical points)</p> <p>Conflicts/overlay with other agricultural and local initiatives</p> <p>Not integration with the Gruppi di Acquisto Solidale (self-sustained networks for the purchase of agricultural products)</p>
---------------------------	--

ACTIONS, TOOL USEFUL / REPLICABLE	<p>stakeholders and actors involvement</p> <p>strategic vision (multi-issues integration)</p> <p>communication and involvement strategies</p>
--	---

LINK	www.parcodellerisaie.it/
-------------	--



DESR - DISTRETTO DI ECONOMIA SOLIDALE RURALE DEL PARCO AGRICOLO SUD MILANO, District of Sustainable rural Economy of PASM (Parco Agricolo Sud di Milano - South Rural Park of Milan)

BUON MERCATO DI CORSICO
(LOCAL BIO-FOOD MARKET OF CORSICO MUNICIPALITY)



Urban-rural park improvement, food chain, landscape improvement

LOCATION OF THE PRACTICE

The “physical market” is localised in the Municipality of Corsico (Cabassina Park), food production and farmers involved from the whole PASM park (but also from other provincial district and regional territories)

START DATE OF THE PRACTICE

The DESR Association was founded in 2008
The “Buon Mercato” was opened in 2010

ACTORS, STAKEHOLDERS AND LOCAL COMMUNITIES INVOLVEMENT

DESR

Citizen and stakeholders interested in fair economy of Milan context, environmental and cultural associations, farmers and local administration
Since the 2008 foundation the District begins to build up a territorial network, constituted today by: 20 GAS (Gruppi di Acquisto Solidale - self-sustained networks for the purchase of agricultural products), 12 farms, ethical founding/bank (Mag2, Banca Etica and CAES - Insurance Ethics) and the other stakeholders exiting the area of the Park (time banks, fair trade shops, associations and committees for the protection of territory and two municipalities - San Giuliano and Corsico).

BUONMERCATO

main stakeholders are:

- _ DESR - DISTRETTO DI ECONOMIA SOLIDALE RURALE DEL PARCO AGRICOLO SUD MILANO, District of Sustainable rural Economy of PASM (Parco Agricolo Sud di Milano - South Rural Park of Milan)
- _slow food (association)
- _ GAS (Gruppi di Acquisto Solidale - self-sustained networks for the purchase of agricultural products),
- _ municipality of Corsico
- _ citizen
- _ environmental associations

DETAILED DESCRIPTION OF THE PRACTICE:

The main goal of the **DESR** is the preservation and redevelopment of the Park and its agriculture. In the PASM Park are present 47,000 acres of fields, 61 municipalities, almost a thousand agricultural holdings: for this reasons the "rural" is its fundamental connotation. A (short to medium term) goal of DESR is the construction of the basket of products of the park, based on the requests of the GAS but also on other actors of the territory, able to induce an offer local agricultural increasingly diverse and adequate.

In collaboration with the DESR two municipalities have activated two initiatives:

- _ BuonMercato (Corsico municipality)

- _ the project "Bread and roses For New Lifestyles in the South Park" (with the City of San Giuliano Milanese): promotion of the behaviour of families and young people towards sustainable practices of citizenship "Bread and Roses")

BUONMERCATO is an Association (of citizen, farmers, stakeholders and local institutions) and a physical market and a point of bio-food distribution

BuonMercato is not a store. It is a service center for social and solidarity economy organised and supported by the association of BuonMercato.

The **BuonMercato** is a local service center, which aims to promote new lifestyles and consumption that make it more sustainable and eco-friendly the present and future of the local community. The Market supports the short chain and consumption 'responsible', to facilitate change and continuity of virtuous behaviour and it is a structure hosting meetings between citizen and actors interested in promoting local production, sustainability

In the BuonMercato structure you can find a wide choice of food, for body care and home care. BuonMercato provides a booking service and delivery of food production (and other products), inspired by principles: enhancement of local production of quality, promotion of sustainable consumption, land conservation, joint relationships

DESR - INITIATIVES

2013, March, 25 _ “agricultural metropolis” congress (Metropolis is the agricultural conference sponsored by Fondazione Cariplo, FAI and PASM Park to discuss on proximity farming, new food chain and public policy towards sustainability ...). During the congress the DESR presented main activities organised and main output of the discussion forum on “sustainable food chain and local communities”.

2012, February 22 _ “breeding and agriculture: a different approach towards sustainability” (a training initiatives for the local farmers)

2013, February 21 _ workshop: a new agriculture in the PASM park

2013_ Mapping the agricultural food chain (Wheat chain map, agricultural food chain map, Vegetable chain map > download of the map form the website)

SPECIFIC ACTIONS/POLICES ON FOOD PRODUCTION/FOOD CHAIN

Since 2010: local food markets organisation (local agricultural products market in the metropolitan context of Milano). The DESR organises 4/5 markets each month in different Zones/municipalities of Milan Metropolitan Area

LESSONS (POSITIVE)	<p>DESR</p> <p>Networking (the capacity to set up a strong network of actors and stakeholders with the shared issue of the local sustainability)</p> <p>Integrated actions/strategies focussed on different “action” level: a) market and food chain/purchase; b) behaviour changes towards sustainability (citizen/farmer involvement),c) research and educational</p> <p>Successful initiatives realised (broad consensus)</p> <p>Integrated approach (both operative and educational)</p> <p>Buonmercato</p> <p>A large networking (consumers and farmer/producers)</p> <p>Agreement between citizen association and local administration</p> <p>Attention to the quality of its marketplace</p> <p>Integration between the “food market” aspects and the general “sustainability” goals</p> <p>Model of “local bio-food” market (in terms of vision of the initiatives and the organisation of the service)</p>
ACTIONS, TOOL USEFUL / REPLICABLE	<p>Local market and food distribution initiatives</p> <p>Integrated approach (both operative and educational)</p> <p>Model of “local bio-food” market (in terms of vision of the initiatives and the organisation of the service)</p>
LINK	<p>http://www.desrparcosudmilano.it/</p> <p>http://www.buonmercato.info/</p>